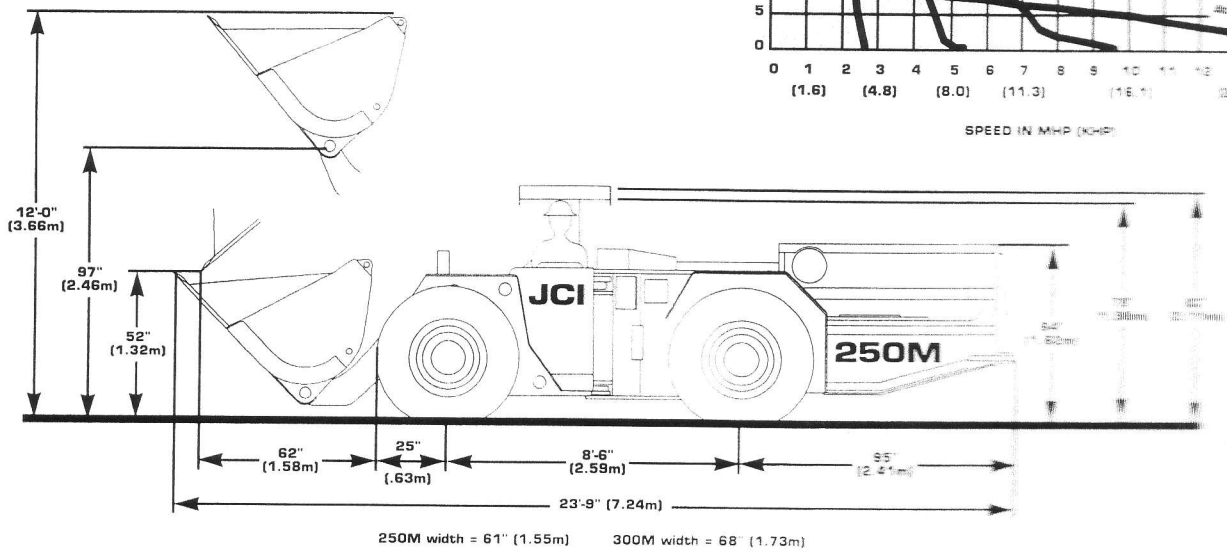
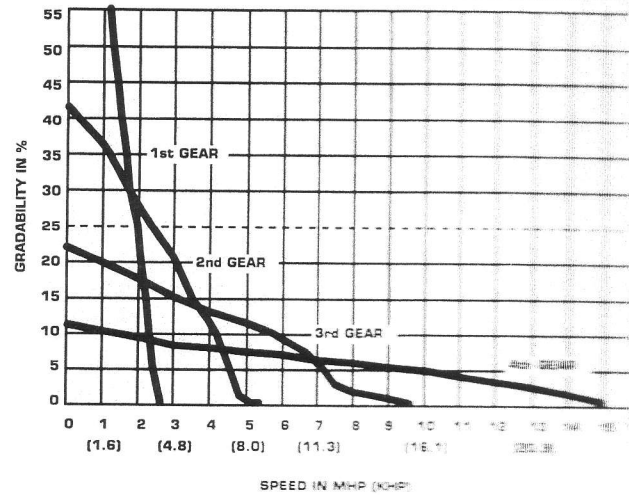


JCI

250M-300M SERIES LHDs

PERFORMANCE SPECIFICATIONS

	250M	300M
Rated Load Capacity	7,500 lbs. (3,409 kg.)	9,000 lbs. (4,090 kg.)
Standard Bucket Capacity		
Semi Nominal Heaped	2.5 yd ³ (1.91 m ³)	2.9 yd ³ (2.22 m ³)
Struck	2.1 yd ³ (1.60 m ³)	2.4 yd ³ (1.83 m ³)
Maximum Breakout Force (bucket roll back)	21,210 lbs. (9,641 kg.)	16,870 lbs. (7,668 kg.)
Operating Weight (empty)	26,000 lbs. (11,818 kg.)	26,450 lbs. (12,023 kg.)



JCI CMS

John Clark, Inc.
A CMS Company
4955 Bannock Street
Denver, Colorado 80216 USA
Tel: (303) 892-6800
Fax: (303) 892-1408

Dealer locations: Four Corners, Quebec, Sudbury, Ontario, Thompson, Manitoba, Saskatchewan, Alberta.
Other locations: San Francisco de Mostaza, Chile, Perth, Sydney, and Kariyuki, Australia.

**JCI
JOHN CLARK INC.
MACHINE SPECIFICATIONS
MODEL 300M**

Performance Specifications

Rated load capacity	9,000 LBS. (4,090 KG)
Standard Bucket Capacity	
Semi nominal heaped	2.9 Cubic Yards (2.22m ³)
Struck	2.4 Cubic Yards (1.83m ³)
Static tipping load, 0° articulation	21,210 LBS. (9,641 KG)
Maximum breakout force (bucket rollback)	16,870 LBS. (7,668 KG)
Speeds	See Performance Curve
Boom raise time	4.1 seconds
Boom lower time	2.6 seconds
Bucket rollback time	4.3 seconds
Bucket dump time	5.7 seconds
Operating weight empty	26,450 LBS.(12,023kg)

Engines

Make/Model	Deutz F5L413FRW
Configuration/Cooling	Inline 5-cylinder/air cooled
HP-Mine service rating	116 HP @ 2300 RPM
MSHA ventilation requirements	10,000 CFM
MSHA Certification	24D 116-C

Make/Model	Caterpillar/3304 P0T
Configuration/Cooling	Inline 4-cylinder/Water cooled
HP-Mine service rating	116 HP @ 2200 RPM
MSHA Ventilation requirements	23,000 CFM
MSHA Certification	24/D54-T

Torque Converter

Clark C-270 series single stage, heavy duty industrial type.

Transmission

Clark 32,000 series full power shift with 4 speeds forward and reverse, and forward-reverse clutch modulation.

Axles

Front and rear - Clark 14 D series, with spiral bevel differential, full floating axles, wheel end planetary reduction units, no-spin differential and integral oscillation trunion.

Overall reduction ratio 25.715

Wheels and Tires

Demountable earthmover design rims, tube or tubeless as specified. Tires are 14.00 X 24, 20-Ply; L-5 specification, with underground mine service compound. Optional sizes available upon request. *BRIDGE STONE* .

Brakes

Service -- Outboard mounted and fully enclosed multiple disc type on all 4 wheels. Brakes are actuated by the hydraulic system and are cooled by axle lubricant. Front and rear systems are independent circuits and operate simultaneously.

Parking -- Single, spring applied, hydraulically released dry disc brake caliper operating on front axle input shaft.

Steering

Hydraulic power stick steering for bi-directional operation. Machine is center articulated, with 2 hardened steel center pins and self aligning ball bushings.

Turning angle 38° each direction; total of 76°

Oscillation

Rear axle oscillation +/- 3.5° (total 7°). Axle housing pivots in ~~8 1/4" diameter aluminum~~ - bronze bushings and thrust washers.

Hydraulic System

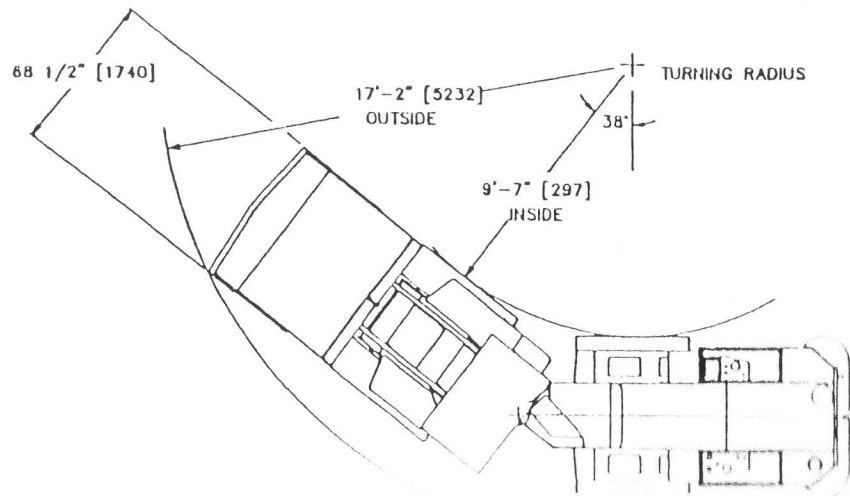
Cylinders,	double acting with chrome plated piston rods, base and rod diameter.
(1) Steering	5"/2.5" (127mm/63.5mm)
(2) Hoist	5"/2.5" (127mm/63.5mm)
(1) Dump	6"/2.5" (152.4mm/63.5mm)
Pump rated @ 2300 Enging RPM	Variable displacement axial piston type with load sensing.
Main pump	39 GPM (147 LPM)
Main Valve	Sectional closed center type with load sensing capabilities.
Pressure & Return filters	Full flow with 10 micron absolute and electric clog indicator.
Reservoir capacity	35 Gal. U.S. (133 L) Sealed and pressurized.

Fluid Capacities

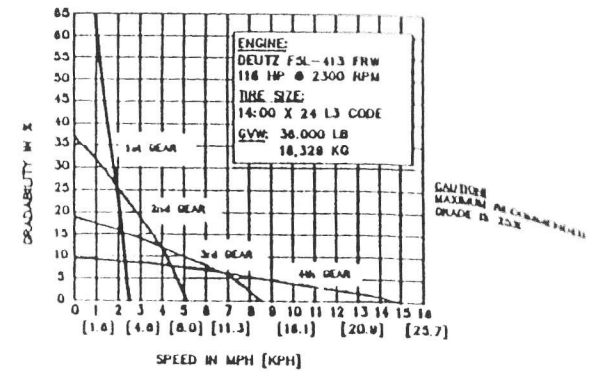
Fuel tank	35 Gal. U.S. (133 L)
Engine crankcase, less filter (CAT)	5 Gal. U.S. (19 L)
Engine crankcase, less filter (Deutz)	5 Gal. U.S. (19 L)
Transmission and torque convertor	3.5 Gal. U.S. (13.2 L)
Front & rear axles - center section	2.6 Gal. U.S. (9.9 L)
Front & rear axles - Planetaries, ea.	10 Gal. U.S. (38 L)
Engine cooling system (Caterpillar)	12.0 Gal. U.S. (45.6 L)

Electrical System

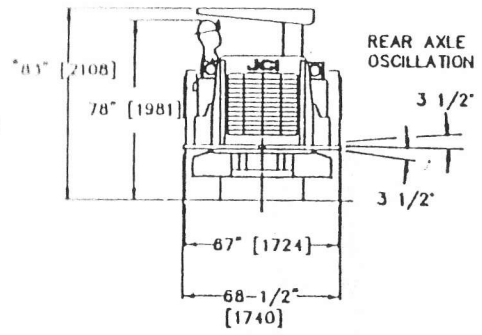
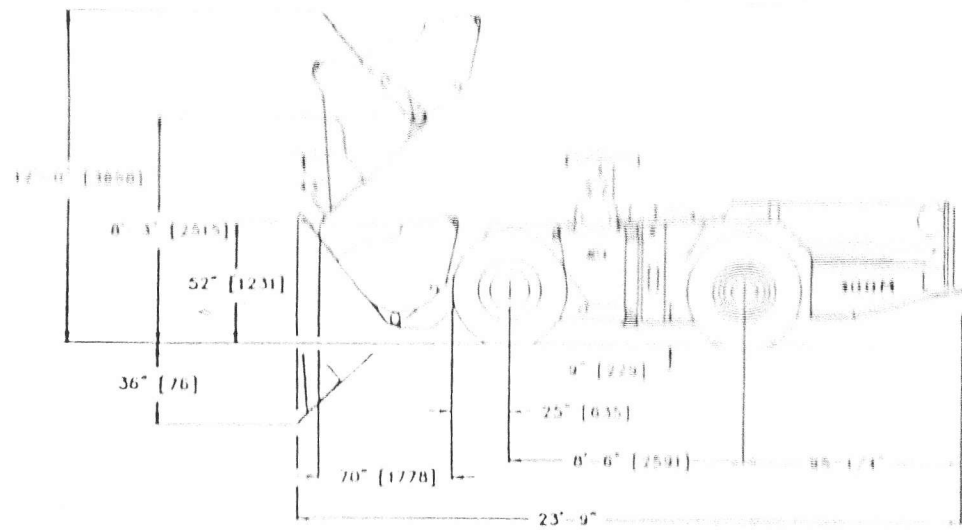
24 VDC starting, 24 VDC instrumentation and lighting. Dual 30H size batteries.
Alternator is Delcotron 30SI series.



JCI 300M 1HD



ADDITIONAL PERFORMANCE INFORMATION IS CONTAINED IN SPECIFICATIONS BULLETIN



• OPTIONAL CANOPY HEIGHT AVAILABLE AS REQUESTED

[] METRIC DIMENSIONS IN MILLIMETERS OR METERS (m)
OPTIONAL EQUIPMENT MAY CHANGE SOME DIMENSIONS

300M SQUARE BACK LOAD HAUL DUMP MACHINE

JCI John Clark Inc. Denver, Colorado USA

DATE	QUANTITY	BY
1/8/92		
REV	REVISED BY	REVISED DATE

389017-B